

LELAND

MAIN ADDRESS	5221 W Congress Pkwy
PIN(S)	16-16-122-025
BUILDING SF	15,400
LAND SF	42,632
INCLUDES ANNEX/ BRANCH	Modular unit building
OWNERSHIP	PBC
ALDERMAN	Chris Taliaferro
WARD	29
NEIGHBORHOOD	South Austin
ZONING	RS3 residential & business uses
MAINTENANCE COSTS (as school)	\$118,233
CARRY COSTS (vacant)	\$34,544



TIF INFORMATION

TIF District	TIF Balance thru 2017	TIF Expiration	Adjacent TIF	Adjacent TIF Balances thru 2017
Harrison/ Central	(\$3,667,115)	12/31/2030	1) Madison/Austin 2) Roosevelt-Cicero Ind. Corridor	1) \$3,936,489 2) \$16,271,508



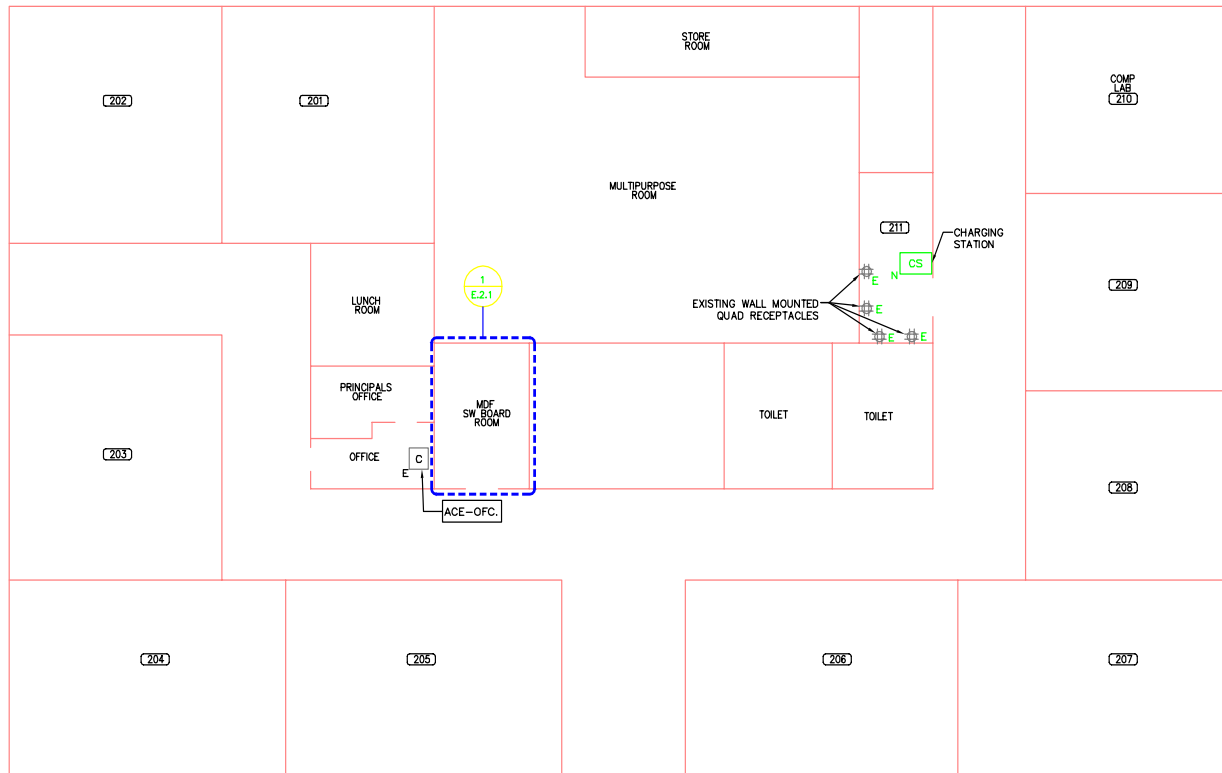
LELAND

ADDITIONAL NOTES

EXISTING PLAN:	Not Applicable
PARK EXPANSION POTENTIAL	Not Applicable
CAMPUS PARK GROUND ISSUES	Not Applicable
PUBLIC ART	Not Applicable
HISTORIC PRESERVATION	Building is not a priority for historic preservation.

TYPICAL FLOORPLAN MAIN - 1ST FLOOR

LELAND - APPENDIX B - SCOPE OF WORK - (PROJECT #2003-7320-Y4D)



- NOTES:
1. THIS IS THE FIRST AND ONLY FLOOR OF THE SCHOOL.
 2. THE ROOM NUMBERS SHOWN ARE CORRECT.



CHICAGO PUBLIC SCHOOLS CAPITAL IMPROVEMENT PROGRAM YEAR 4 E-RATE PROGRAM		UNIT NO. 7320
GEORGE LELAND ELEMENTARY SCHOOL		
FIRST FLOOR PLAN POWER		
McDonough Associates Inc. Engineers/Architects	SHEET NO. E.1.1	
PROJECT NUMBER: 2002-0039 SCALE: AS NOTED DATE: 8-5-02		

NO.	DATE	REVISION	BY