

2017-2018

CCA Board of Directors

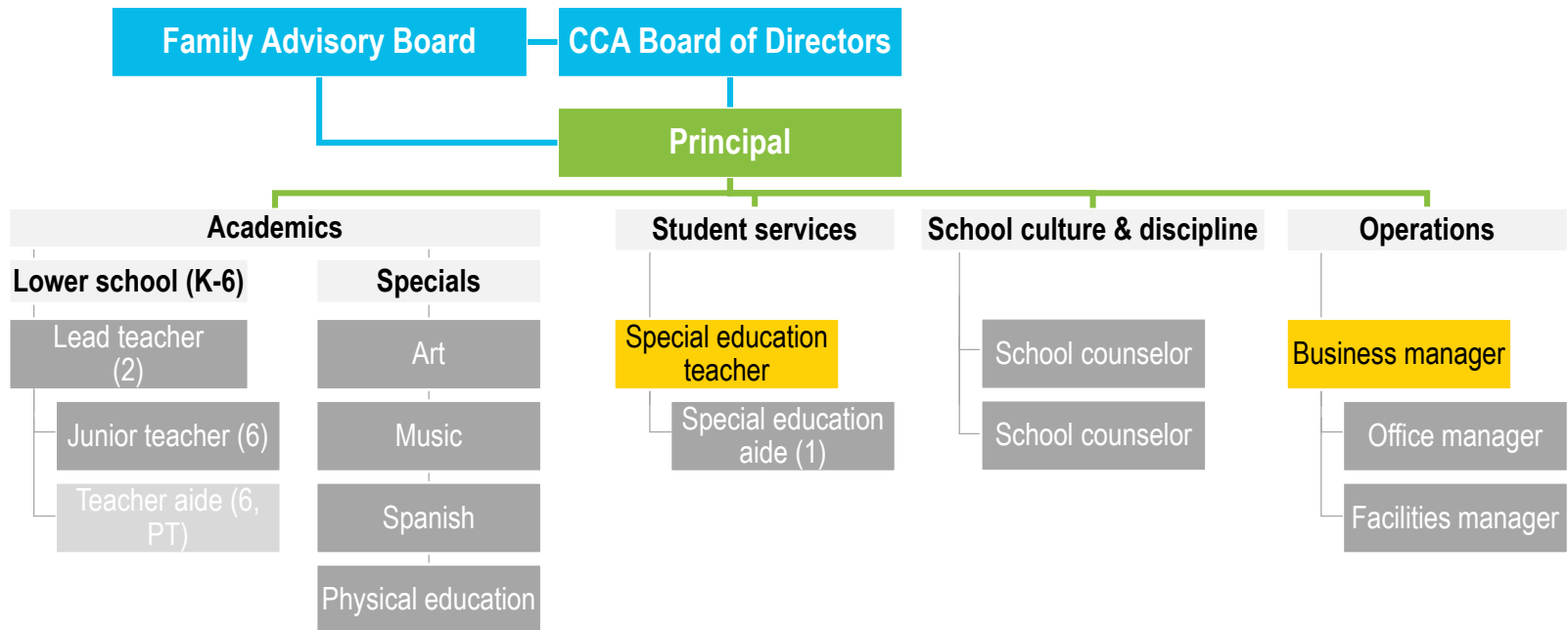


Principal



Business manager

2018-2019

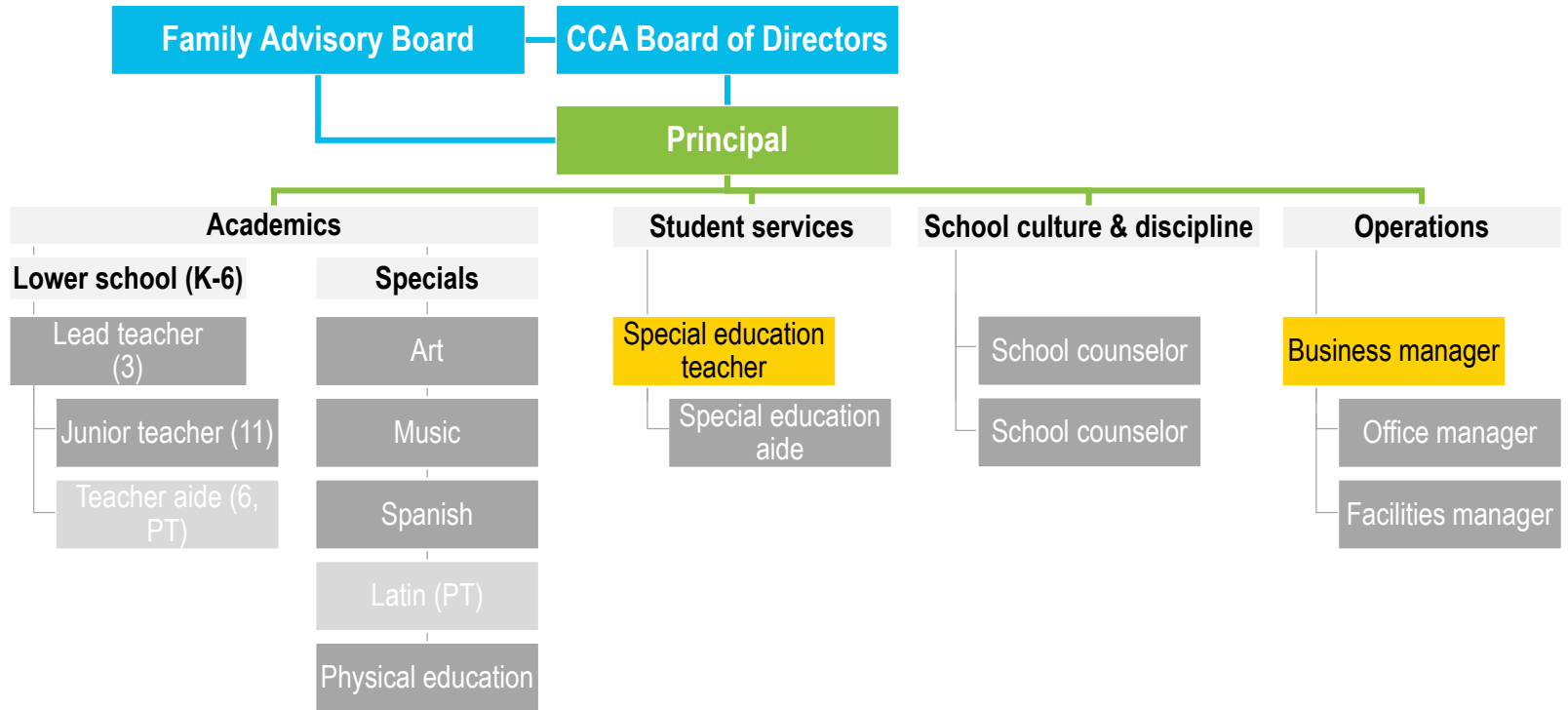


Total academic staff: 14 FT; 6 PT
Student-teacher ratio (FTE): 13.2:1

Total administrative staff: 6
Student-total staff ratio (FTE): 9.7:1

Grades served: K-5
Projected student enrollment: 224

2019-2020

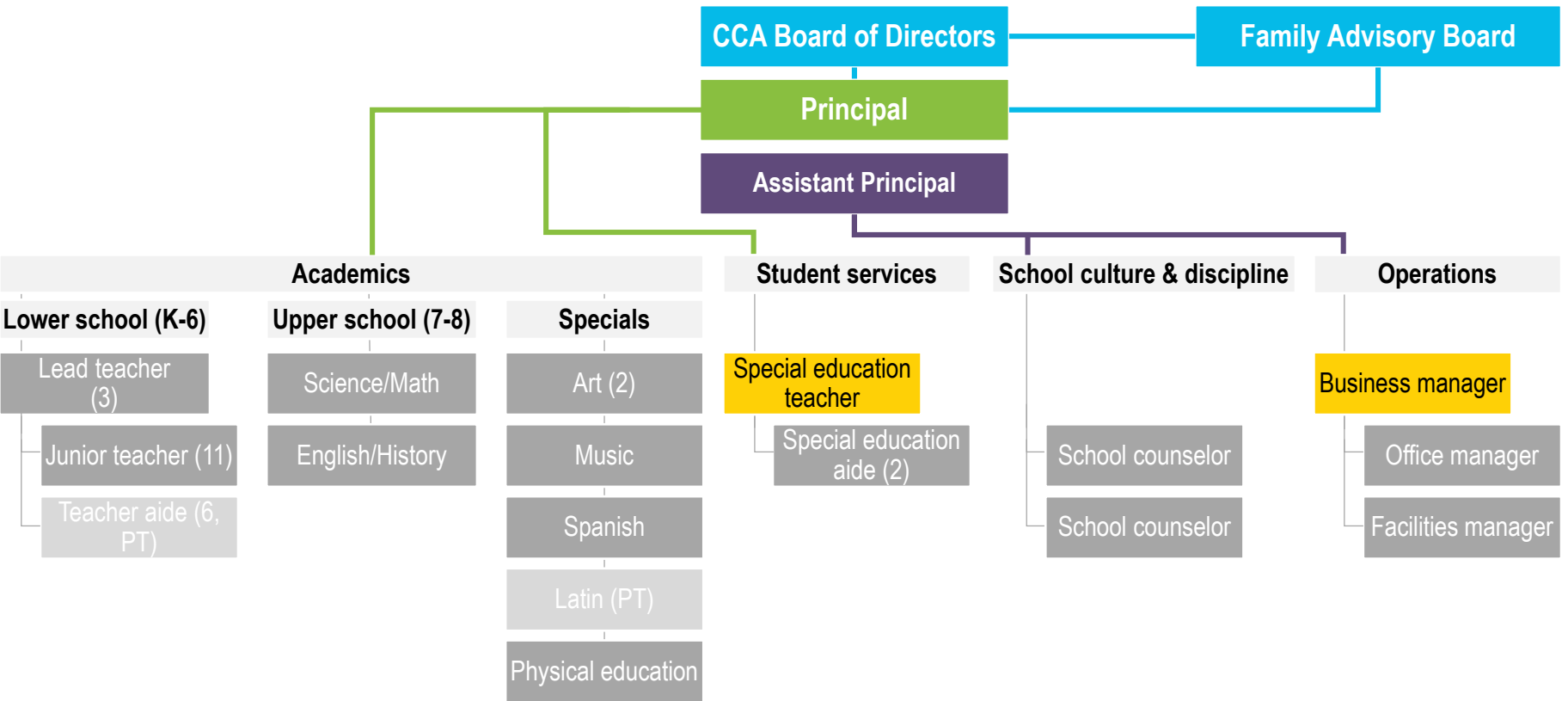


Total academic staff: 20 FT; 7 PT
Student-teacher ratio (FTE): 13.4:1

Total administrative staff: 6
Student-total staff ratio (FTE): 10.6:1

Grades served: K-6
Projected student enrollment: 314

2020-2021

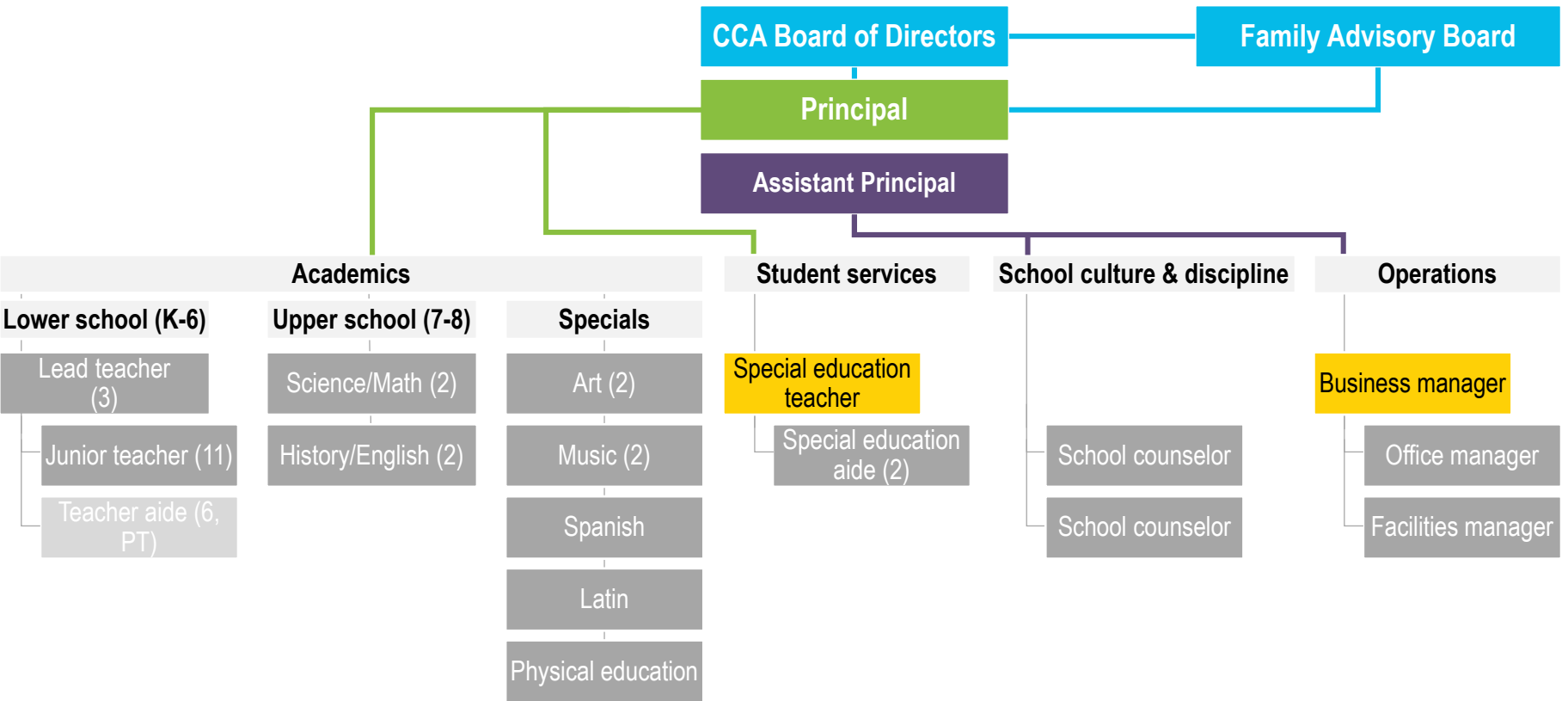


Total academic staff: 24 FT; 7 PT
Student-teacher ratio (FTE): 14.7:1

Total administrative staff: 7
Student-total staff ratio (FTE): 11.7:1

Grades served: K-7
Projected student enrollment: 404

2021-2022

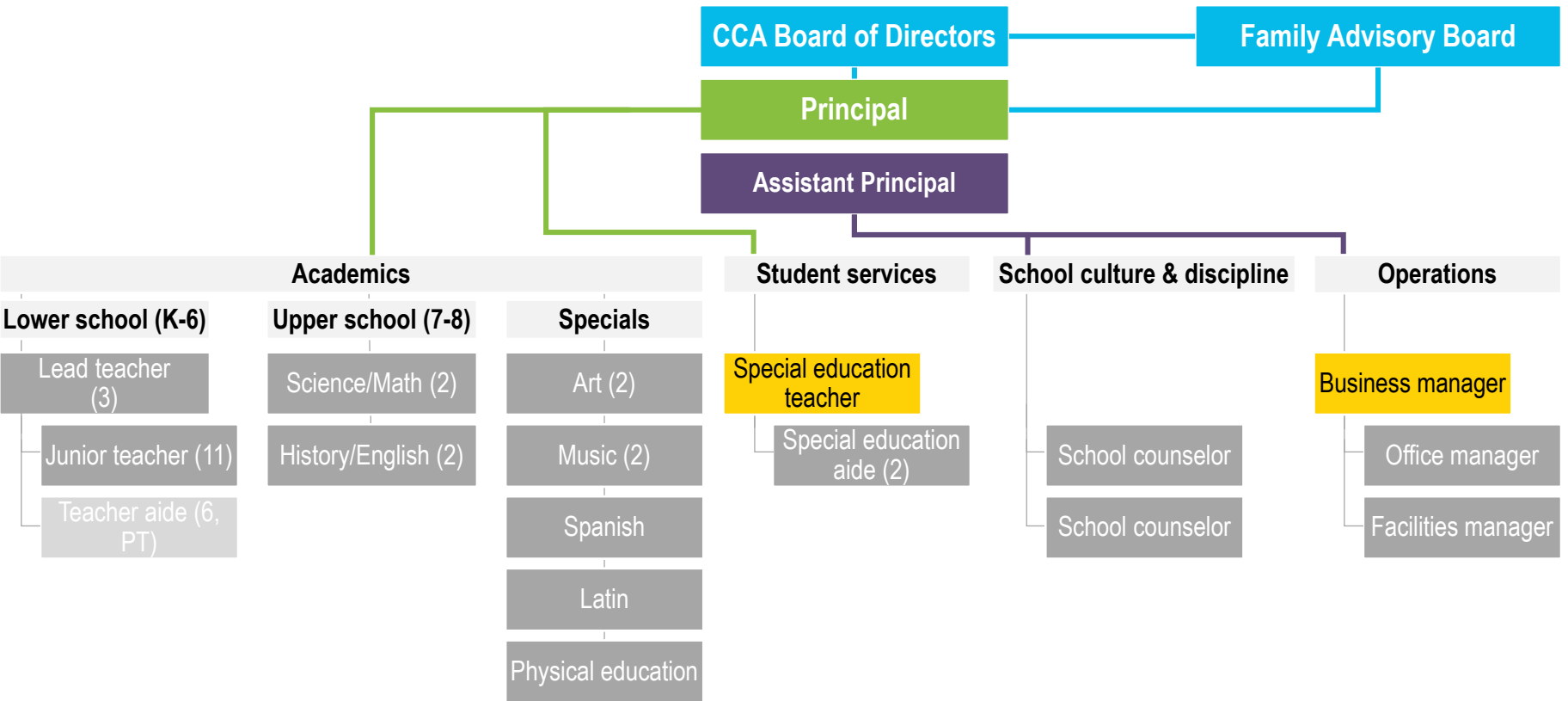


Total academic staff: 28 FT; 6 PT
Student-teacher ratio (FTE): 16.3:1

Total administrative staff: 7
Student-total staff ratio (FTE): 13.3:1

Grades served: K-8
Projected student enrollment: 504

FULL ENROLLMENT



Total academic staff: 28 FT; 6 PT
Student-teacher ratio (FTE): 16.3:1

Total administrative staff: 7
Student-total staff ratio (FTE): 13.3:1

Grades served: K-8
Projected student enrollment: 504