

# KIPP:Chicago

COLLEGE PREP PUBLIC SCHOOLS

September 27, 2013



# New MAP-based Performance Policy

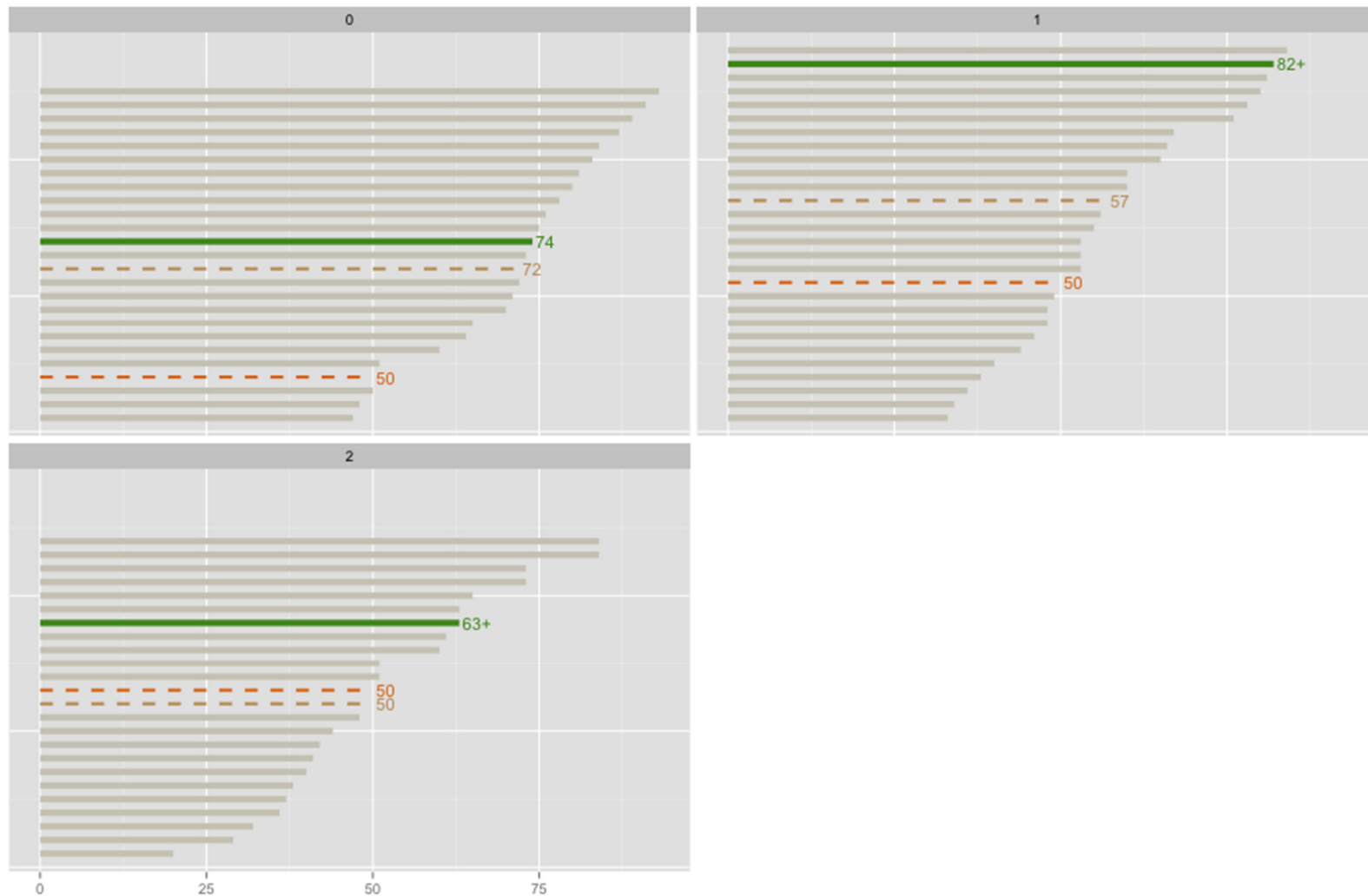
Category	Points Possible	Points Earned	Weighted Points Possible	Weighted Points Earned
MAP Growth	20	18	2.25	2.06
MAP Attainment	10	7	0.75	0.50
ELL	5	4	0.25	0.20
Other Non Instructional	15	12	1.75	1.25
<b>Totals</b>	<b>50</b>	<b>41</b>	<b>5</b>	<b>4.01</b>

**4.0125** points places KIPP Ascend (Primary and Middle) in CPS top tier of Distinguished Schools.

Old ISAT-Based PRPP Category	2009-10	2011 – 2013	2012 – 2013
ISAT Composite % Meets/Exceeds	39.3%	43.4%	<b>43.0%</b>
Performance Level	Level 3	Level 2	Level 3

## MAP Reading

# KIPP Chicago vs. KIPP Network-Primary Schools Percent Meets/Exceed Expected Growth



Legend KIPP KIPP Network National Norm KIPP Ascend Primary School

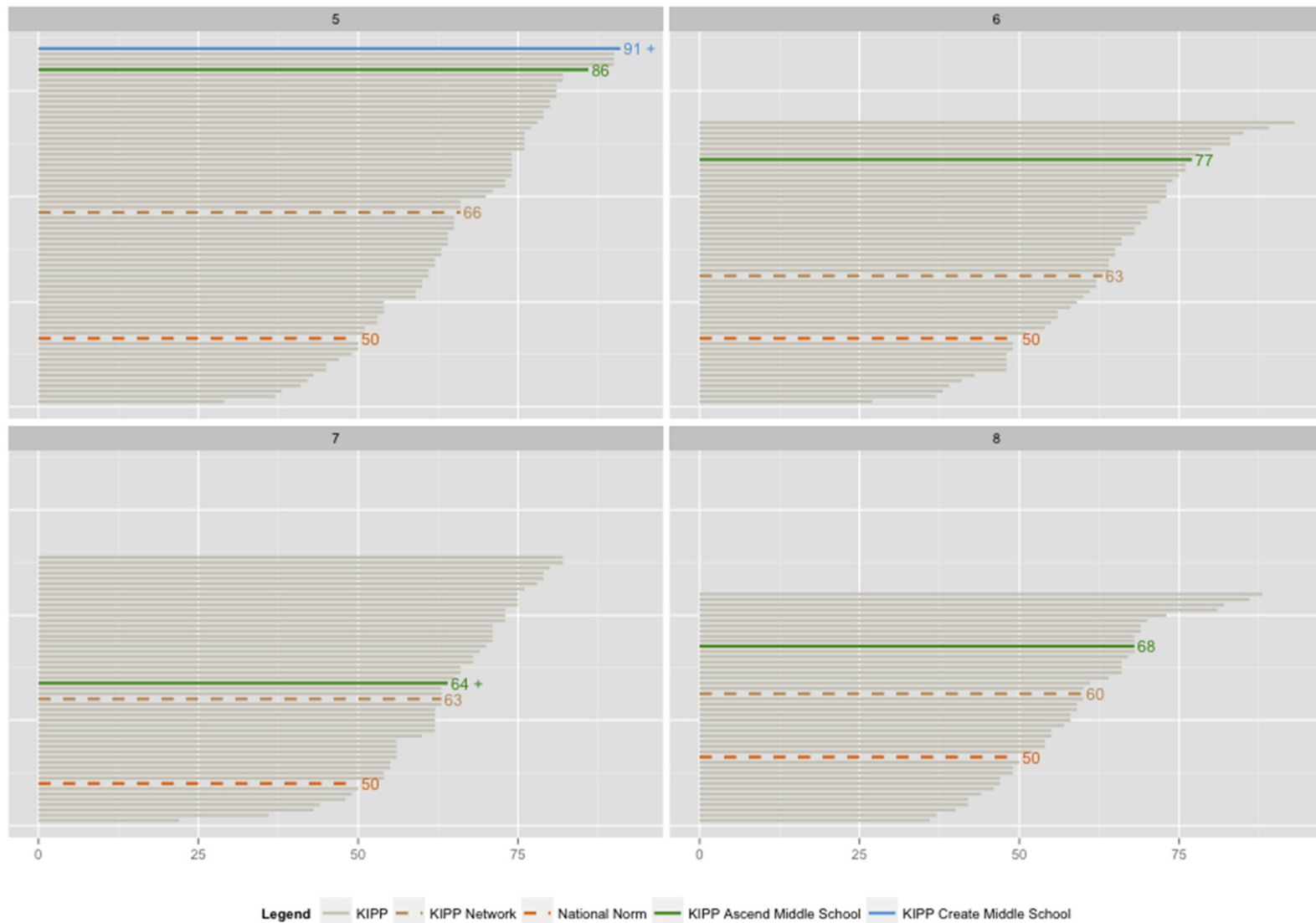
## MAP Mathematics

# KIPP Chicago vs. KIPP Network-Primary Schools Percent Meets/Exceed Expected Growth



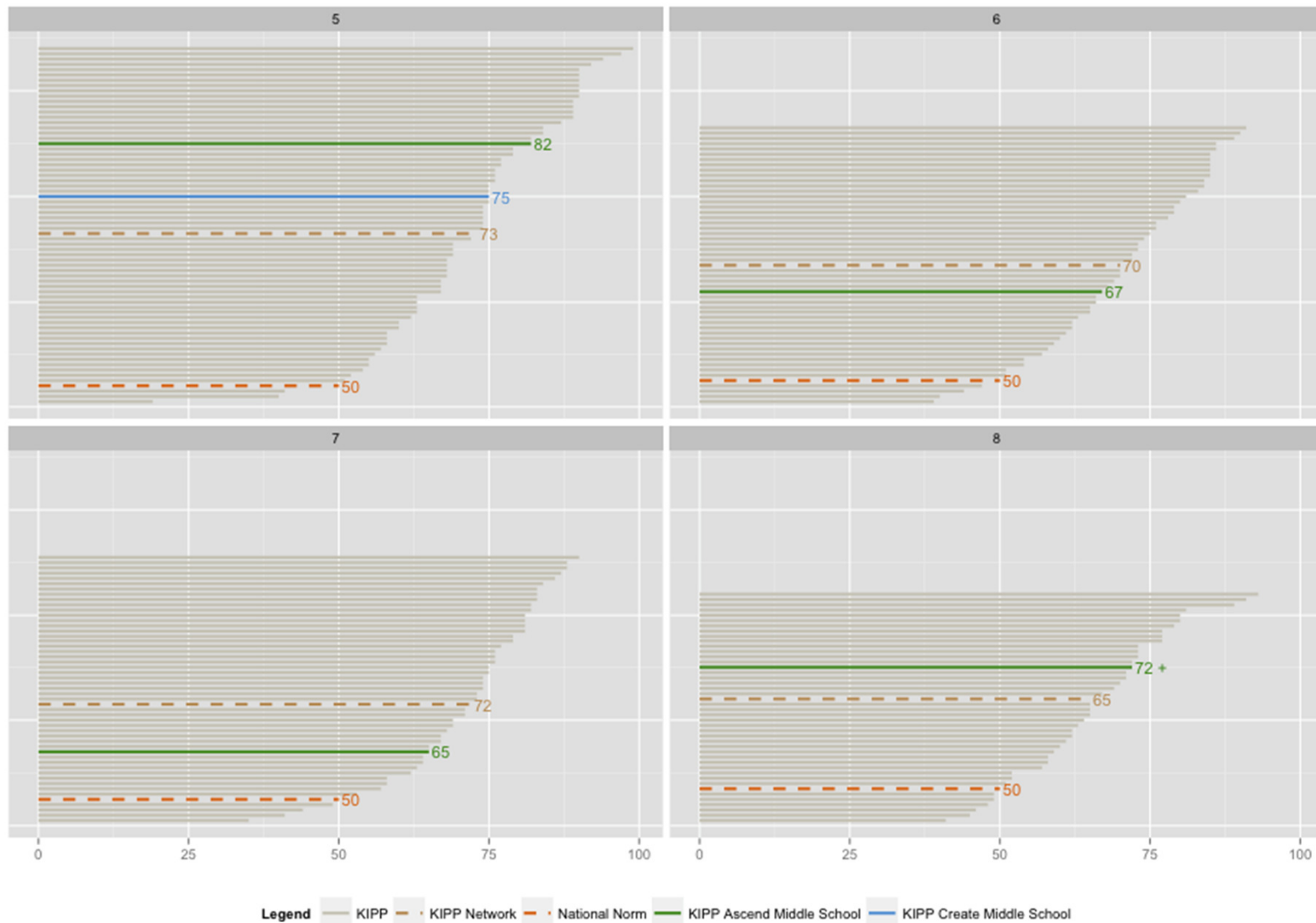
## MAP Reading

# KIPP Chicago vs. KIPP Network-Middle Schools Percent Meets/Exceed Expected Growth



# MAP Mathematics

## KIPP Chicago vs. KIPP Network-Middle Schools Percent Meets/Exceed Expected Growth





COLLEGE PREP PUBLIC SCHOOLS

# **KIPP Chicago Schools Board Meeting**

November 22, 2013



# KIPP Ascend Primary School update

**FOR DISCUSSION**

## School at-a-glance

- 411 students / Grades K-3
- Neighborhood: North Lawndale
- Student population: 96% FRM / 10% SpEd

## Recent events



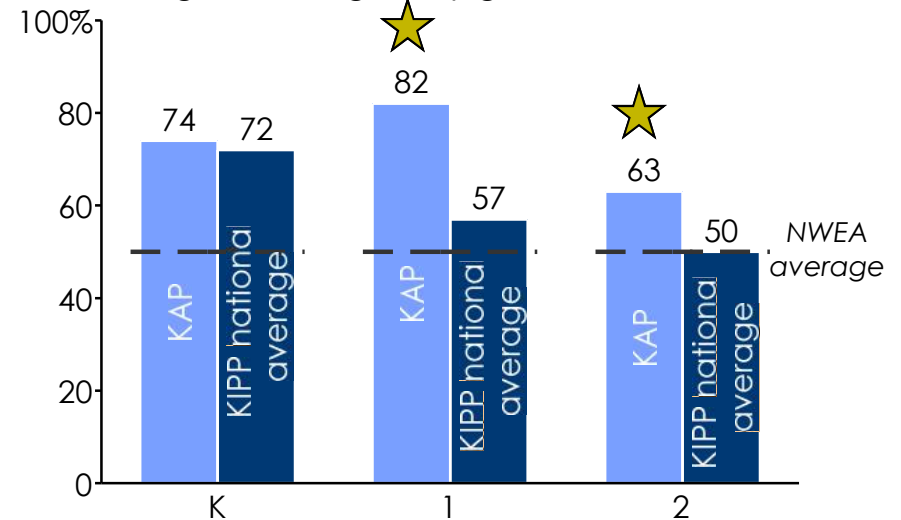
Third graders recently created a "Brave" video to showcase their bravery. Sara Bareilles, who sings "Brave," recognized KAP at her concert in Chicago!

KAP celebrated the fall with a Literacy Festival featuring living storybooks.

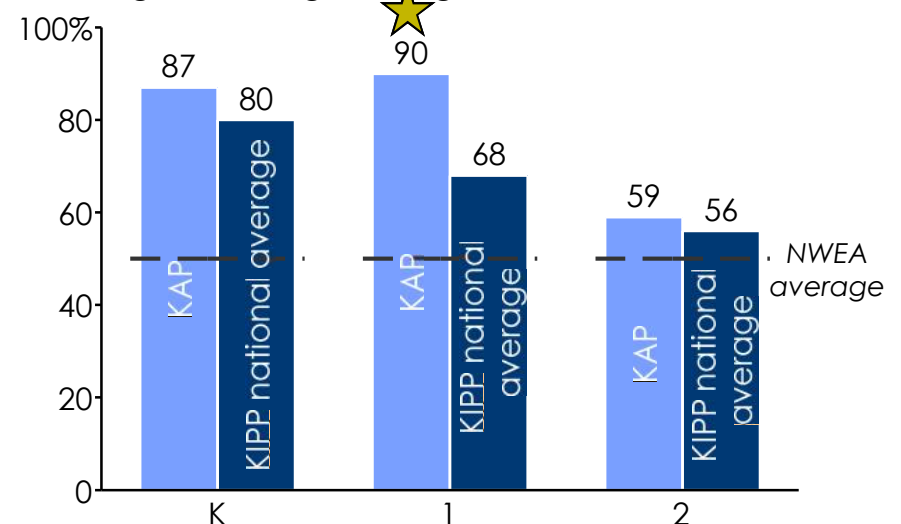


## Academic achievements

% of KAP students meeting fall-to-spring MAP **reading** growth targets by grade, 2012-2013



% of KAP students meeting fall-to-spring MAP **math** growth targets by grade, 2012-2013





# KIPP Ascend Middle School update

**FOR DISCUSSION**

## School at-a-glance

- 323 students / Grades 5-8
- Neighborhood: North Lawndale
- Student population: 94% FRM / 14% SpEd

## Recent events



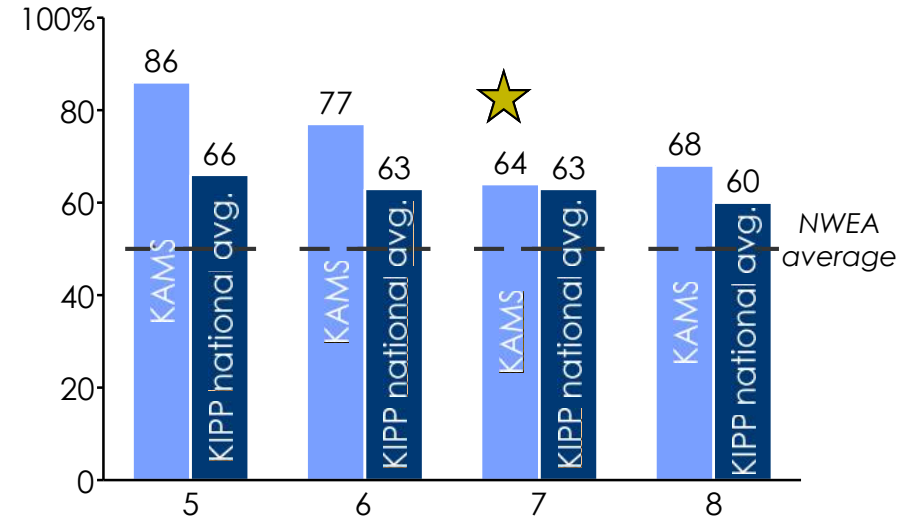
Eighth grade students recently travelled to Notre Dame to see the school (and the ND v. USC pep rally).



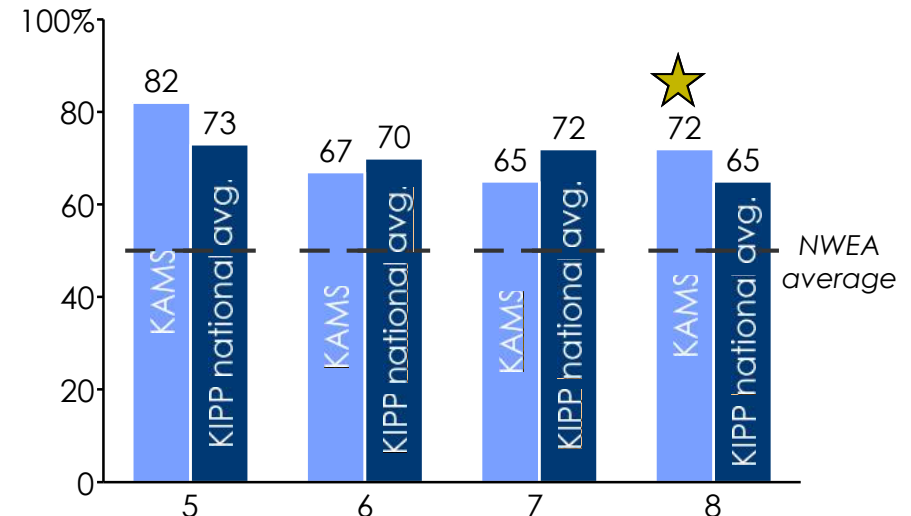
KAMS students recently started participating on a step team.

## Academic achievements

% of KAMS students meeting fall-to-spring MAP **reading** growth targets by grade, 2012-2013



% of KAMS students meeting fall-to-spring MAP **math** growth targets by grade, 2012-2013



Note: ★ denotes grade recognized as among top KIPP performers nationwide  
Source: NWEA

# KIPP Create College Prep update

**FOR DISCUSSION**

## School at-a-glance

- 165 students / Grades 5-6
- Neighborhood: Austin
- Student population: 96% FRM / 10% SpEd

## Recent events



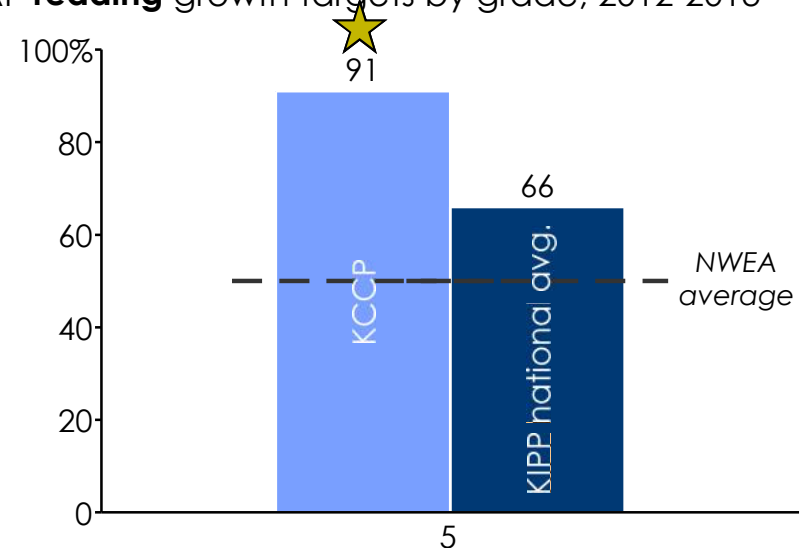
Create celebrated Halloween by dressing as vocabulary words (pictured: "Introduction" and "Retired.")



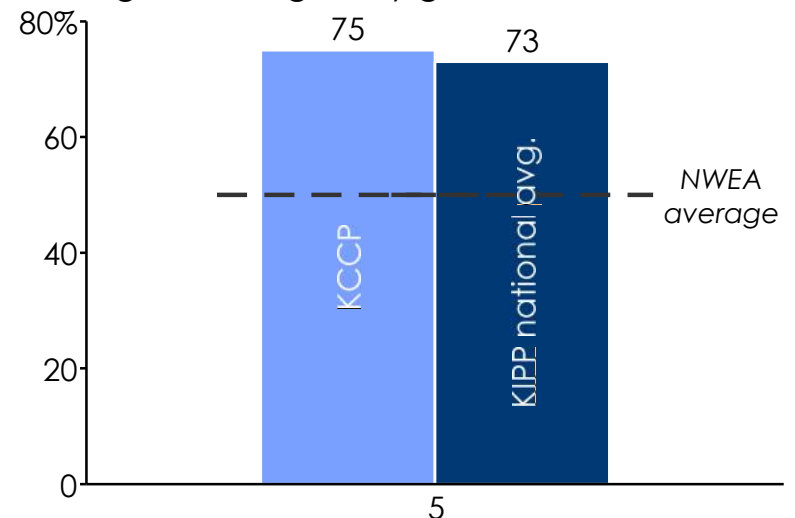
Create students have recently begun participating in several after-school activities, including Zumba and Math Club, put on by Create teachers.

## Academic achievements

% of KCCP students meeting fall-to-spring MAP **reading** growth targets by grade, 2012-2013



% of KCCP students meeting fall-to-spring MAP **math** growth targets by grade, 2012-2013



### School at-a-glance

- 88 students / Grade 5
- Neighborhood: Englewood
- Student population: 88% FRM / 13% SpEd

### Academic achievements

- KIPP Bloom is a first year school and consequently does not have historical data
- We are excited to work with these students to help them achieve their growth goals and continue preparing for college

### Recent events



KIPPsters celebrated the end of Q1 with a trip to the University of Chicago.

KIPPsters participated in yoga and Capoeira (Brazilian martial arts) classes to practice self-discipline and increase self-esteem.



KIPPsters recently learned how to calculate GPA / what a "college-ready" GPA is in math class.

# KIPP:Chicago

COLLEGE PREP PUBLIC SCHOOLS

March 24, 2013

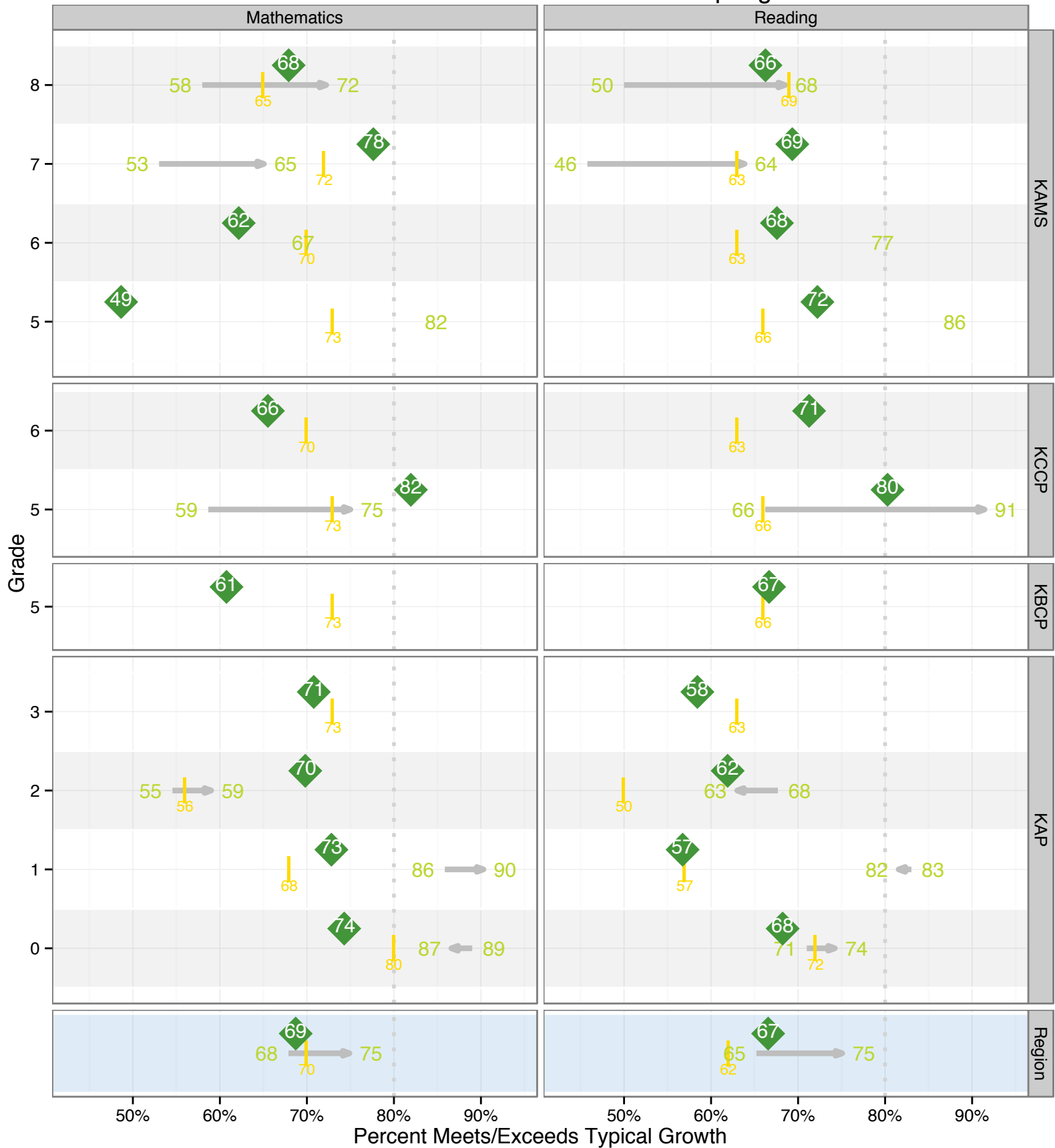
---

---

# KIPP Chicago

## Percent Meeting/Exceeding Typical RIT Growth

### Fall-Winter 2013-14 vs. Fall-Winter & Fall-Spring 2012-13



SY-Season a 2012-13 KIPP Network (Spring) a 2012-13 (Winter & Spring) a 2013-14 (Winter Only)

■ 2013-14 Goal — Winter 12 to Spring 13

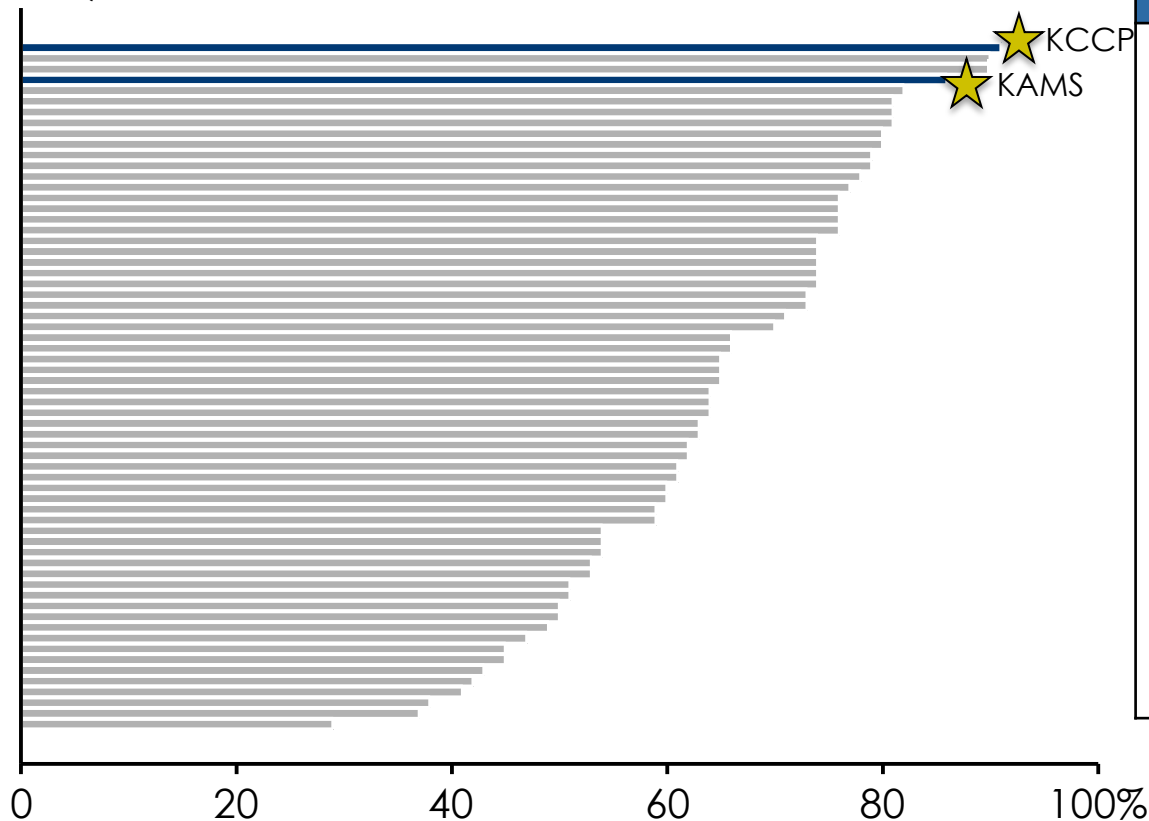
# Select results: In 2012-13, KIPP Chicago saw its highest literacy scores and often outperformed KIPP nationally

School	Class	% OF STUDENTS MET / EXCEEDED GROWTH TARGET, 2012-13		% INCREASE IN STUDENTS ABOVE 50TH PERCENTILE	
		KIPP network	KIPP Chicago	KIPP network	KIPP Chicago
KCCP	5 Literacy*	66%	91%	6%	32%
KCCP	5 Math	73%	75%	0%	15%
KAMS	5 Literacy	66%	86%	6%	22%
KAMS	6 Literacy	66%	77%	6%	27%
KAMS	5 Math	73%	82%	0%	15%
KAMS	8 Math*	65%	72%	4%	7%
KAP	1 Literacy*	57%	82%	7%	30%
KAP	1 Math*	68%	90%	12%	41%

\*Class recognized as top KIPP performer nationally

# Select results: KIPP Chicago saw its highest 5<sup>th</sup> grade literacy results to date in 2012-13

Percent of students meeting / exceeding fifth grade reading growth goals, 2012-2013, **all** KIPP schools



## Fifth grade literacy overview

- KIPP Chicago's schools ranked #1 and #4 among all KIPP schools for students meeting / exceeding growth goals in fifth grade literacy in 2012-13
- At KCCP, 91% of students met their growth goals
- At KAMS, 86% of students met their growth goals
- In both classrooms, teachers used instructional technology to differentiate instruction



# KIPP:Chicago

COLLEGE PREP PUBLIC SCHOOLS

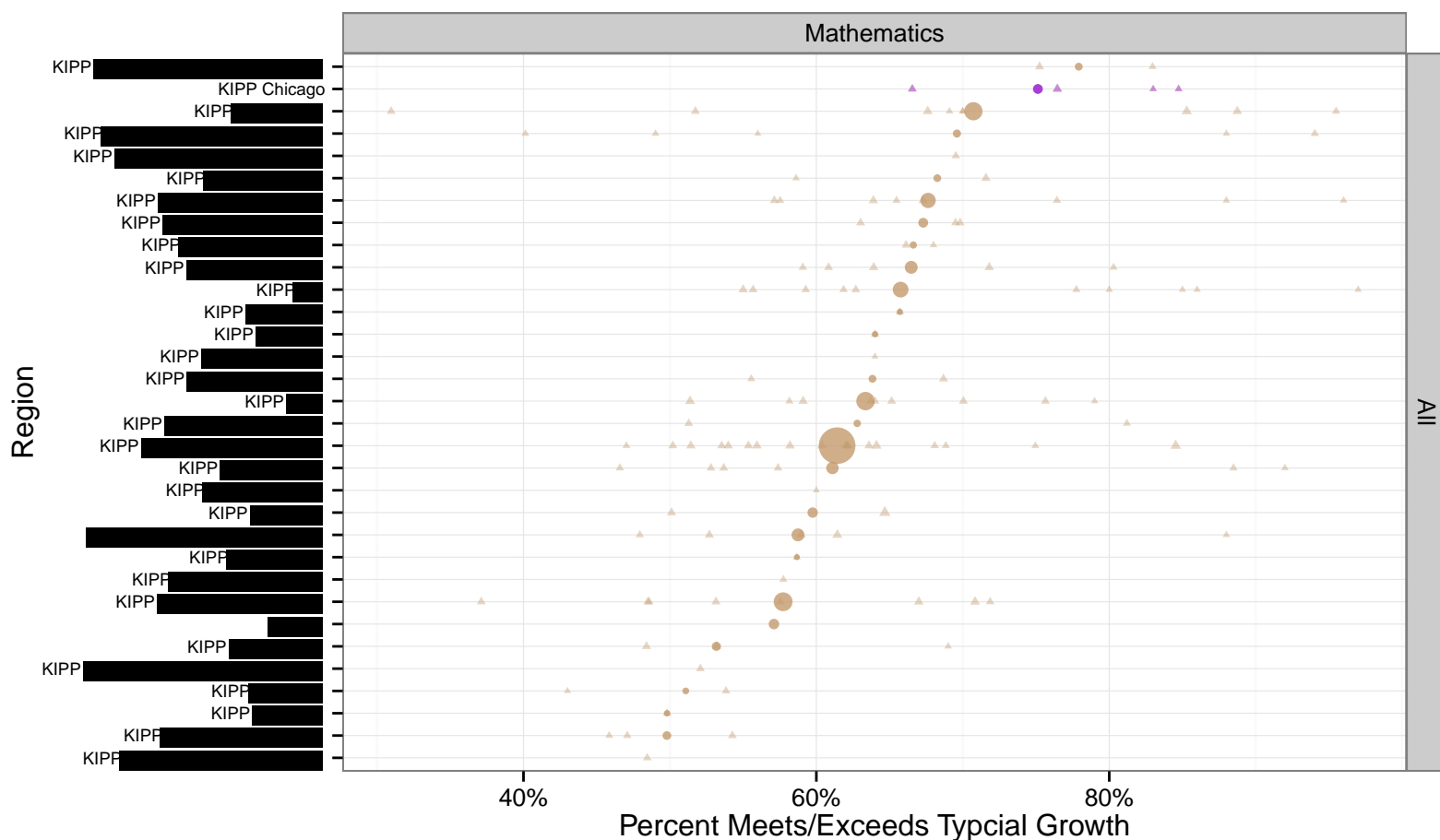
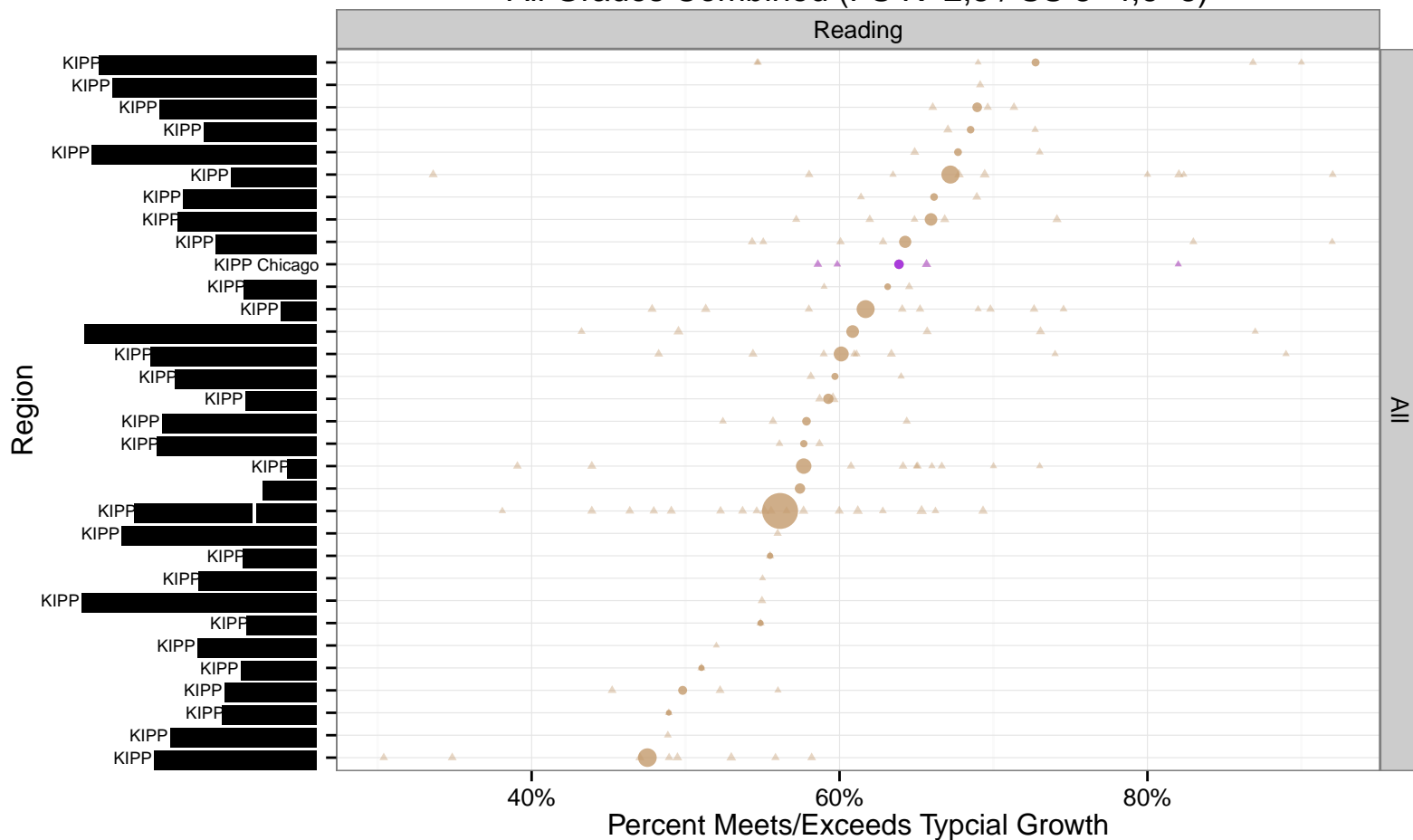
August 29, 2014

---

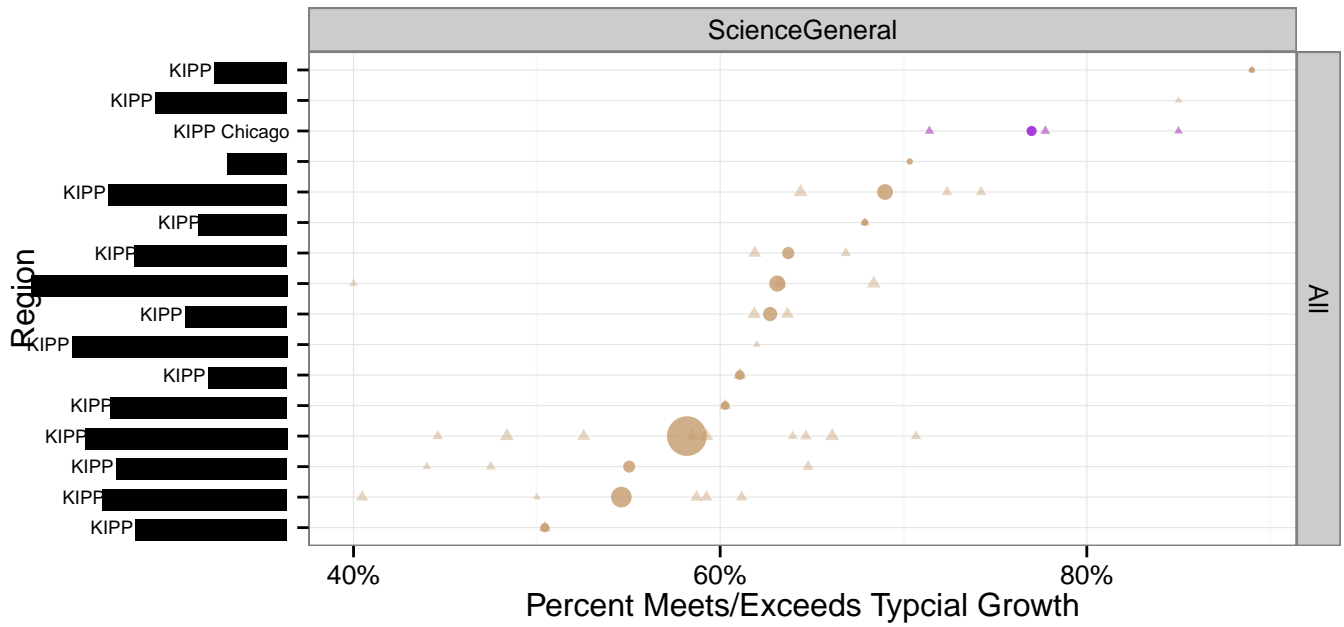
---

# KIPP Network SY 2013–14 MAP Performance

2013 – Spring 2014 MAP Percent Meets/Exceeds Typical Growth  
All Grades Combined (FS K–2,5 / SS 3–4,6–8)



## Total Students



	2	3	5	6	7	8	
General Science	88%	48%	53% 45% 68% 77% 85%	61% 41% 47% 88%	56% 58% 59% 79%	46% 54% 81%	
Mathematics	59% 67%	76%	45% 66% 75% 82% 83% 87% 96%	43% 56% 67% 72% 90%	51% 49% 65% 91%	51% 57% 72% 83%	
Reading	63% 57%	76%	37% 70% 86% 88% 85% 82%	46% 62% 77% 71% 85%	51% 56% 64% 91%	49% 73% 68% 78%	

School	KAMS	KAP	KBCP	KCCP