

DE DIEGO

Project Summary

Project Type: Welcoming School Improvement
 Department: Facilities
 Status: Planning
 Unit Number: 31261

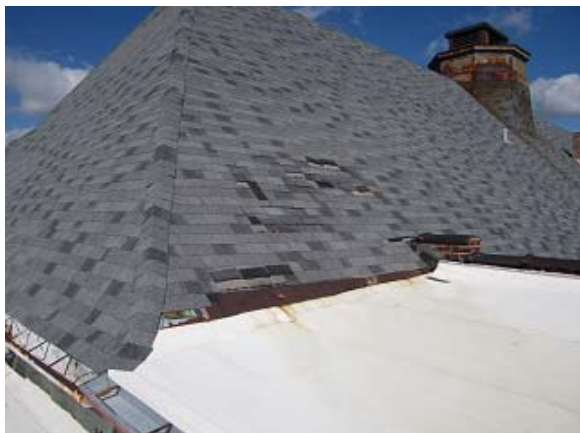
Budget Amount: \$7,870,000
 Budget Year: 2013
 Estimated Project Start: April 2013
 Estimated Project Complete: October 2013

Provide an environment that is conducive for learning to students by welcoming them to a building that is warm, safe and dry. Minimal cosmetic repairs will be provided to improve surfaces such as floors, walls, and ceilings. Lunchroom capacity will be expanded to meet needs of the projected enrollment. Supporting labs for the new IB programs will be upgraded or provided, such as art, science, computer.

Financial Details

<u>Project Phase</u>	<u>Original Budget</u>	<u>Current Estimate:</u>	<u>\$7,870,000</u>
Design:	\$421,079	Expenditure to Date:	\$0
Construction:	\$6,889,117	Percent Complete:	0%
Environmental:	\$112,011	Funding Source:	CPS Resources
Management:	\$447,793	Operating Impact:	\$0
Project Total:	\$7,870,000		

Details



Ideal Program Enrollment: 1140
 2011/2012 Enrollment: 807
 Space Utilization Index (Status): -29% (underutilized)
 Performance Level: Level 2
 Building Age: 95 Years
 Network: Fulton Elementary Network

Scope

- IT infrastructure and equipment upgrades to support new programs and incoming students.
- Technology enhancements to ensure the safety & security for students and staff.
- 20% ADA and local building code required accessible path of travel features.
- Improvements to the existing facility to ensure that the building is in accordance with applicable building codes.
- Targeted mechanical upgrades to ensure an adequately operating heating and cooling system (if cooling currently exists).
- Specific and limited improvements to the building envelope (parapets, masonry, roof) to eliminate any potential water infiltration.
- Specific interior improvements to the floors, walls and ceilings of classrooms/corridors primarily, to enhance the condition of the learning environment.
- Furnishings, fixtures and equipment to support the new programs and students.
- New window A/C units and supporting infrastructure to meet the demand of every classroom.
- New art lab(s).
- New laptop cart to support IB/STEM Program.
- New Smart Board to support new IB/STEM Program.

