

JOHNSON

Project Summary

Project Type: Welcoming School Improvement
 Department: Facilities
 Status: Planning
 Unit Number: 26231

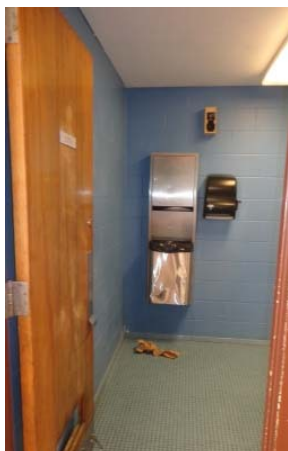
Budget Amount: \$1,080,000
 Budget Year: 2013
 Estimated Project Start: April 2013
 Estimated Project Complete: October 2013

Provide an environment that is conducive for learning to students by welcoming them to a building that is warm, safe and dry. Minimal cosmetic repairs will be provided to improve surfaces such as floors, walls, and ceilings. Lunchroom capacity will be expanded to meet the needs of the projected enrollment. The school will have a hard-wired computer lab(s) to support the projected enrollment. Programmatic ADA upgrades will be provided to ensure that students, family members and visitors with disabilities have access to all programs within the school.

Financial Details

Project Phase	Original Budget	Current Estimate:	\$1,080,000
Design:	\$76,327	Expenditure to Date:	\$0
Construction:	\$928,245	Percent Complete:	0%
Environmental:	\$15,092	Funding Source:	CPS Resources
Management:	\$60,336	Operating Impact:	\$0
Project Total:	\$1,080,000		

Details



Refinish or replace interior doors.

Ideal Program Enrollment: 690
 2011/2012 Enrollment: 402
 Space Utilization Index (Status): -42% (underutilized)
 Performance Level: Level 2
 Building Age: 50 Years
 Network: AUSL Schools

Scope

- IT infrastructure and equipment upgrades to support new programs and incoming students.
- Technology enhancements to ensure the safety & security for students and staff.
- Kitchen modifications / conversions.
- 20% ADA and local building code required accessible path of travel features.
- Improvements to the existing facility to ensure that the building is in accordance with applicable building codes.
- Specific and limited improvements to the building envelope (parapets, masonry, roof) to eliminate any potential water infiltration.
- Specific interior improvements to the floors, walls and ceilings of classrooms/corridors primarily, to enhance the condition of the learning environment.
- Furnishings, fixtures and equipment to support the new programs and students.
- New window A/C units and supporting infrastructure to meet the demand of every classroom.



Replace window A/C units.