

COONLEY

Project Summary

Project Type: New annex, site, interior work

Department: Facilities

Status: Planning

Unit Number: 22821

Budget Amount: \$20,000,000

Budget Year: 2013

Estimated Project Start: June 2013

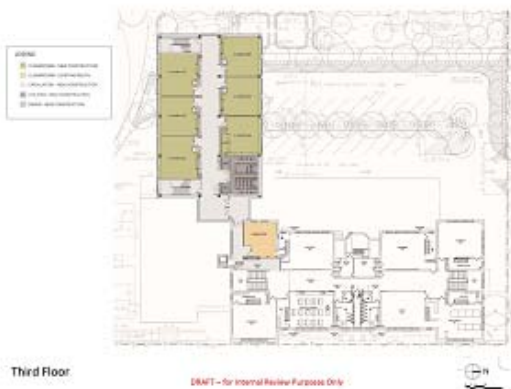
Estimated Project Complete: December 2014

Coonley is a Level-1 school based on performance measures and its enrollment has been growing for the past 8 years. The ideal capacity is 540 students, but the 20th day enrollment for the 2012-2013 school year for Coonley was 716 students, which translates to a utilization index of +33%. This is 13% beyond the efficiency range and as a result, the school is classified as overcrowded. The school also had to convert Science and computer lab to homeroom and Sp-Ed programs are currently being serviced in converted office spaces. As part of addressing the current and future overcrowding issues, a new annex with 12 classrooms and lunchroom is proposed and the existing lunch room at main building will be converted back the original use as a classroom.

Financial Details

Project Phase	Original Budget	Current Estimate:	\$20,000,000
Design:	\$848,962	Expenditure to Date:	\$0
Construction:	\$17,711,793	Percent Complete:	0%
Environmental:	\$287,979	Funding Source:	TIF
Management:	\$1,151,266	Operating Impact:	\$0
Project Total:	\$20,000,000		

Details



Ideal Program Enrollment: 540

2011/2012 Enrollment: 716

Space Utilization Index (Status): 33% (overcrowded)

Performance Level: Level 1

Building Age: 111 Years

Network: Ravenswood-Ridge Elementary Network

Scope

- New 3-story (32,000 SF) linked annex with 12 classrooms and dining and new kitchen.
- Work at main building includes: conversion of existing lunch room back to classroom and to provide access corridor to new link. New window AC and upgrades to existing boiler system.

