

CRANE HS

Project Summary

Project Type: Board of Education Approved School Action
 Department: Facilities
 Status: Closing
 Unit Number: 46081

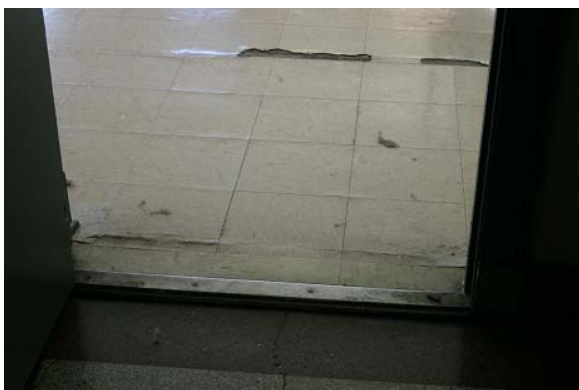
Budget Amount: \$3,671,578
 Budget Year: 2012
 Construction Start Date: June 2012
 In Service Date: August 2012
 Anticipated Completion Date: May 2013

Crane was selected by Chicago Public School officials as an approved school action to co-share with Talent Development Charter School. The purpose of this project is to provide interior upgrades.

Financial Details

Project Phase	Original Budget	Current Estimate:	\$7,300,000
Design:	\$228,251	Expenditure to Date:	\$3,567,046
Construction:	\$3,184,553	Percent Complete:	49%
Environmental:	\$51,778	Funding Source:	CPS Resources
Management:	\$206,996		
Project Total:	\$3,671,578		

Details



Ideal Program Enrollment: 1200
 2011/2012 Enrollment: 387
 Space Utilization Index / Status: -68% (underutilized)
 Performance Level: Level 3
 Building Age: 90 Years
 Network: West Side HS

Scope

The work planned at this facility is the result of CPS's Board Turnaround Action; it is funded by the (not yet approved as of this writing) FY12 capital plan, 10.6 (Office of School Turnarounds) at \$7.3 M project-complete (or, approx. \$5.177 M construction).

The main elements of the work focus on:
 √ lighting (partial, as needed),
 √ painting,
 √ flooring

However, the facility is being holistically scoped for any other deficiencies that may take precedent, to assure an appropriate educational environment.

This is a scope-to-budget project.

This is an Office of New Schools co-share and simultaneous phase-out of the current Crane HS

