

CICS - ChicagoQuest North

1443 N Ogden Ave Chicago, IL 60610
(773)565-2100 • <https://chicagoquest.org> • @ChiPubSchools



School Quality Rating

This school received a Level 2 rating based on the CPS School Quality Rating Policy (SQRP). More information about what this rating means and how it is calculated is available at cps.edu/sqrp.

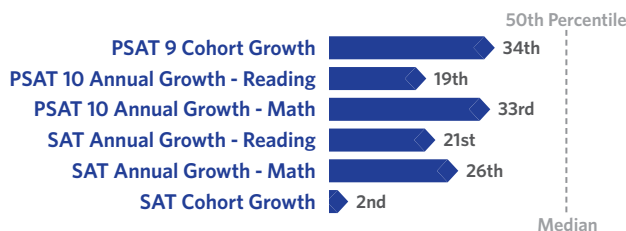
Accountability Status: Not Applicable

This school does not receive an official accountability status because its performance measures are determined by its contract with the Chicago Board of Education.

Student Growth

BELOW
AVERAGE

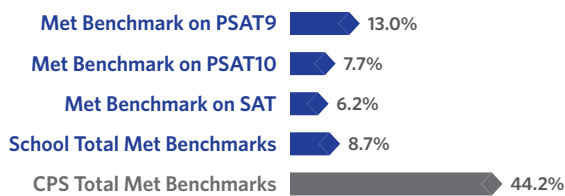
Student Growth at this school was below average, which means that students' actual 2019 PSAT and SAT composite scores were lower than their expected PSAT and SAT composite scores.



Student Attainment

FAR BELOW
EXPECTATIONS

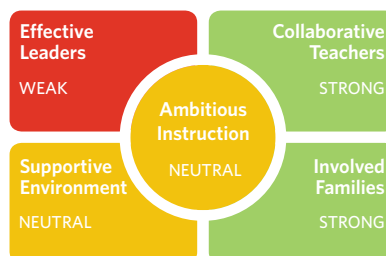
Student Attainment at this school was far below expectations, which means few students met college readiness benchmarks on their grade-appropriate PSAT or SAT assessment in Spring 2019.



School Culture & Climate

ORGANIZED

This school is "Organized for Improvement" which means that the school has a strong culture and climate with only a few areas for improvement. Results are based on student and teacher responses to the My Voice, My School 5Essentials survey. For more information on this survey and additional measures of school culture and climate visit <https://www.5-essentials.org/cps/5e/2019/>.



Teacher Participation Rate:
76.5%

Student Participation Rate:
71.2%

Creative Schools



Certification not yet available; data from this school is still under review.

Supportive Schools



This school has not submitted an action plan to support school climate and social & emotional learning (SEL).

World Languages



Languages offered at this school: This school is not offering World Language courses as of SY 18-19.

This school did not have students who earned the State Seal of Biliteracy in SY 18-19.

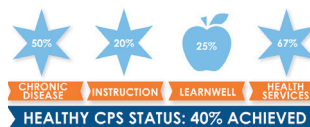
Early College and Career Programs

Early College and Career Programs allow students to earn college credit or career credentials while still in high school.



This school has no Early College and Career Programs at this time.

Healthy Schools



Students learn better at healthy schools! This school is working towards achieving Healthy CPS. Schools must earn 90% of all criteria to become Healthy CPS. Learn more by visiting www.cps.edu/healthycps.

School Stats

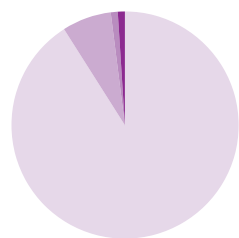
School Type: Charter - Traditional

Enrollment: 236

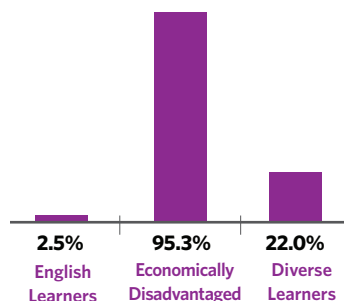
Grades Served: 9-12

ADA Accessibility Level: Usable

Demographics



Black 90.7%
Hispanic 7.2%
White 0.8%
Asian 0.4%
Multi/Other 0.8%



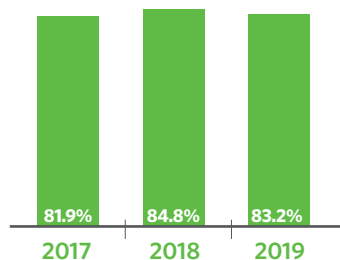
Neighborhood Map



This map shows nearby schools and their SQR ratings based on their performance in the 2018-19 school year. An interactive version of this map, the School Locator, is available at cps.edu/schools.

LEVEL 1+
LEVEL 1
LEVEL 2+
LEVEL 2
LEVEL 3
NOT ENOUGH DATA

Attendance



Freshmen On Track

The percent of freshmen who earned five or more credits without failing more than one semester core class

2018: 83.3%
2019: 83.7%

School Connectedness

Students' reported sense of membership in the school community on the 5Essentials survey

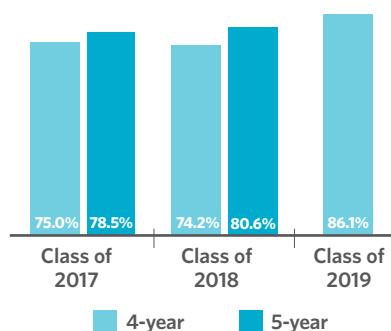
2018: STRONG
2019: NEUTRAL

Suspension Practices

The percent of students who received one or more out-of-school suspensions

2018: N/A
2019: N/A

Graduation Rate



College Enrollment of Graduates

2018: 62.3%
2019: 62.5%

Early College and Career Credential Attainment

2018: 0.0%
2019: 8.5%

One-Year Dropout Rate

2018: 3.8%
2019: 3.7%

Parent Survey

School Community

STRONG

Parent-Teacher Partnership

NEUTRAL

Quality of Facilities

WEAK

Response Rate: 26%

Teachers

N/A

Teachers that are National Board Certified

N/A

Teachers that are returning from last year

N/A

Teacher attendance

